

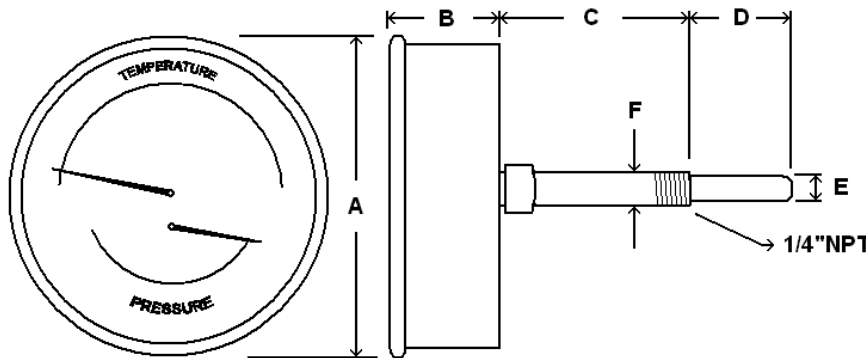
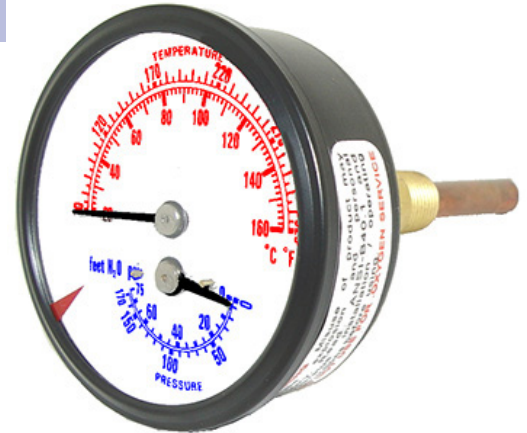
# 2 1/2" TRIDICATORS



**Dual reading pressure and temperature instrument**  
**High quality, economical design for use in commercial and industrial boiler applications**

## SPECIFICATIONS

<b>Dial</b>	2 1/2" (63 mm)
<b>Case</b>	Black painted steel, dry non-fillable
<b>Stem</b>	1.75", 2.95" or 3.63", copper alloy
<b>Lens</b>	Plastic with red indicator
<b>Pointer</b>	Black aluminum
<b>Connection</b>	Center back mount 1/4" NPT, copper alloy
<b>Scale</b>	Pressure: dual scale psi & ft of water column Temperature: dual scale F & C
<b>Temperature Range</b>	70/320° F & 20/160° C
<b>Accuracy</b>	3-2-3% full scale per Grade B, ASME B40.1
<b>Ambient Temp*</b>	-30° F to 180° F



## AVAILABLE OPTIONS\*

- Custom Dial
- Special Connection Size
- Single Scale
- Special Ranges
- Custom Lens Material
- Custom Stem Length
- Custom Lagging Dimension
- Stainless Steel Wetted Parts

Dial	Unit	Stem Length	A	B	C	D	E	F
2 1/2"	In.	1.75"	2.64"	1.02"	0.77"	0.96"	0.31"	0.54"
	mm	44.5	67	26	20	25	8	13.6
2 1/2"	In.	2.95"	2.64"	1.02"	2.00"	0.96"	0.31"	0.54"
	mm	75	67	26	51	25	8	13.6
2 1/2"	In.	3.63"	2.64"	1.02"	2.00"	1.60"	0.31"	0.54"
	mm	92.2	67	26	51	41	8	13.6

\*Lead times/minimums may apply

## APPROXIMATE SHIPPING WEIGHTS/ BOX QUANTITIES

Stem Length	Est. Unit Weight	Box Qty
1.75"	0.30 lbs (0.14 kg)	100
2.95"	0.35 lbs (0.16 kg)	50
3.63"	0.35 lbs (0.16 kg)	50

PART NUMBER	DIAL SIZE	PRESSURE		TEMPERATURE	
		psi	Ft of Water	F	C
TRI-RC-254Rx.xx-D	2 1/2"	0/75	0/170	70-320°	20-160°
TRI-RC-254Rx.xx-G	2 1/2"	0/200	0/460	70-320°	20-160°

*Other ranges available upon request.*

\*NOTE: High or low ambient temperatures may have adverse effect on accuracy. Consult PIC Gauges for instrument selection.